

DAYBREAK

Lifelong Links

Information for Referrers



Lifelong Links is an approach developed by the charity [Family Rights Group](#) and will be delivered by Daybreak as the delivery provider.

What is Lifelong Links?

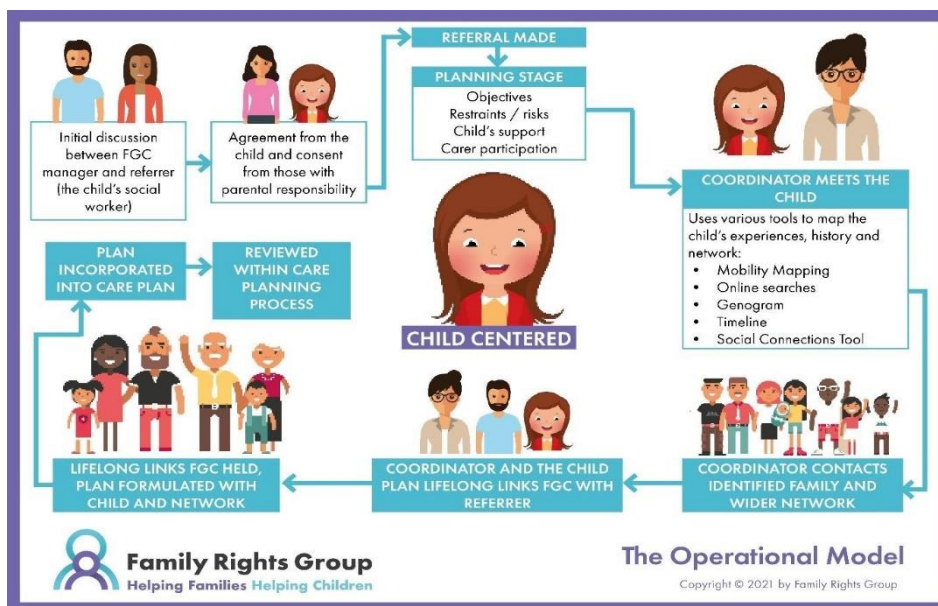


[Lifelong Links](#) is aimed at building a support network, with and for children in care, care experienced young people leaving care, and Asylum-seeking children. The aim of Lifelong Links is to bring together a support network for the young person to make a lifelong lasting support plan with the child or young person that they can carry with them into and beyond their adult years.

We have trained FGC Coordinators, who are training in the Lifelong Links Model as well, will work with a young person to find the people that matter to them. These people are defined as those who are important to the young person, a person that can provide support for them 'no matter what', someone whom the young person has been separated from and would like to reconnect with, this could also be someone that the young person has never met, including grandparents, brothers, sisters, half-siblings and extended family members. They may decide that a teacher, social worker, previous foster carers, community workers are key to their reconnections and future journey.

The Process

The Lifelong Links process follows a child-centred approach. The child/young person must be in agreement with the Lifelong Link Referral and process and be ready to participate in the process as part of their journey.



Consent

As part of the referral process, consent is key. Consent must be received from those who have parental responsibility as well as the young person themselves. It is important to remember this is a voluntary process and consent can be withdrawn at any time throughout the Lifelong Links process. The Lifelong Links aims to work closely with the birth family where safe to do so.

Expectations

What you should expect from Daybreak

- Regular updates from FGC Coordinators these will continue communication throughout the process.
- Independent and impartial involvement focusing on the young person's wants and wishes.
- Keeping the child at the centre and sharing any safeguarding concerns with you
- Full family exploration and mapping to be carried out with the young person
- Preparation meetings with all those attending prior to the FGC.
- To support families to ensure plans are SMART (specific, measurable, accountable, realistic and time specific)
- The FGC/Lifelong Links Celebration to take place in a neutral venue.

What we expect from you

- To be available for the initial planning meeting and future plannings where required.
- Updates on significant changes information for the young person throughout their journey
- Full risk assessment to be carried out on family members and continue to do so throughout the process
- No NEW news – no new information can be shared during the Lifelong links Celebration.
- To be available to attend the entire LLLs Family Group Conference/celebration in person
- Relevant referral forms and information
- Full exploration of consent prior to referral (Lifelong links is voluntary)

Lifelong Links was independently evaluated over three years (2017- 20) by Oxford University, with an additional one-year longitudinal evaluation (2020-21). Information on the impact and evaluation of Lifelong Links can be found [here](#).

Further Information

Daybreak

- www.daybreakfgc.org.uk
- headoffice@daybreakfgc.org.uk
- Follow us on Facebook, Instagram or LinkedIn @daybreakcharity

Family Rights Group

- www.frg.org.uk

DAYBREAK



www.daybreakfgc.org.uk | headoffice@daybreakfgc.org.uk | [@daybreakcharity](https://www.instagram.com/daybreakcharity)

Wessex House, Upper Market Street, Eastleigh, Hampshire, SO50 9FD | 023 80 696 644

Registered Charity No: 1077607 Company No: 3780726 | Registered in England and Wales. Limited by guarantee