

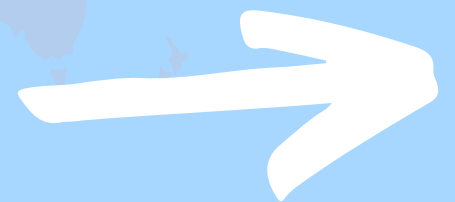
# Super Quick Quiz

Nine questions + bonus facts.

Quiz others or yourself. Swipe for the answers.

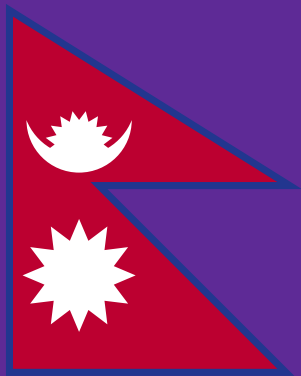
#1

Which country flag has  
more than four sides?



**DAYBREAK**

Enjoyed yourself? Consider donating.  
[www.daybreakfgc.org.uk/puzzling](http://www.daybreakfgc.org.uk/puzzling)



#1

Nepal

Nepal's flag is the world's only irregular flag. The red is thought to symbolise bravery whilst the blue border represents peace.

#2

How many times has  
the UK won Eurovision?

Bonus point for each artist!



**DAYBREAK**

Enjoyed yourself? Consider donating.  
[www.daybreakfgc.org.uk/puzzling](http://www.daybreakfgc.org.uk/puzzling)



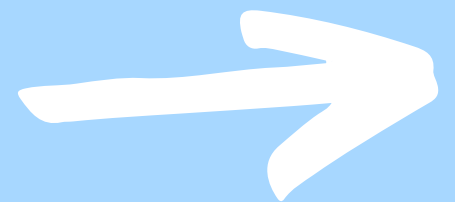
# #2 Five

**Sandie Shaw** - Puppet on a String (1967), **Lulu** with - Boom Bang-a-Bang (1969; in a four-way tie), **Brotherhood of Man** - Save Your Kisses for Me (1976), **Bucks Fizz** - Making Your Mind Up (1981) and **Katrina and the Waves** - Love Shine a Light (1997)



# #3

Name the three astronauts on  
Apollo 11 for the first landing  
on the moon?



**DAYBREAK**

Enjoyed yourself? Consider donating.  
[www.daybreakfgc.org.uk/puzzling](http://www.daybreakfgc.org.uk/puzzling)

# #3

## Neil Armstrong, Buzz Aldrin and Michael Collins

Armstrong and Aldrin both walked on the surface of the moon in the famous 1969 event, whilst Collins was the pilot for the Apollo 11 spacecraft whilst they were exploring!

# #4

## What are the five emotions in Disney's Inside Out?



# DAYBREAK

Enjoyed yourself? Consider donating.  
[www.daybreakfgc.org.uk/puzzling](http://www.daybreakfgc.org.uk/puzzling)

#4

# Joy, Fear, Anger, Disgust and Sadness

The characters are all shaped based on their emotions. Joy is based on a star, Sadness is a teardrop, Anger is a fire brick, Fear is a raw nerve, and Disgust is broccoli.

#5

# What are the three colours in a Paralympics symbol?



**DAYBREAK**

Enjoyed yourself? Consider donating.  
[www.daybreakfgc.org.uk/puzzling](http://www.daybreakfgc.org.uk/puzzling)



#5

## Red, Blue and Green

The three colours reflect some of the most represented colours in national flags around the world. The three Agitos - Latin for “I move” - symbolises motion in celebration of the Paralympic Movement bringing athletes together from across the world to compete.

#6

Which food was (apparently) named after an Italian Queen?



**DAYBREAK**

Enjoyed yourself? Consider donating.  
[www.daybreakfgc.org.uk/puzzling](http://www.daybreakfgc.org.uk/puzzling)



#6

# Margherita Pizza

In 1889, it is believed (by some) that when the Italian Queen Margherita visited Naples a local pizza maker was asked to create a dish to celebrate the visit. He apparently created three, but she preferred the one dressed in the Italian flag colours - red (tomato), green (basil) and white (mozzarella).



#7

Which animal has three hearts?



**DAYBREAK**

Enjoyed yourself? Consider donating.  
[www.daybreakfgc.org.uk/puzzling](http://www.daybreakfgc.org.uk/puzzling)

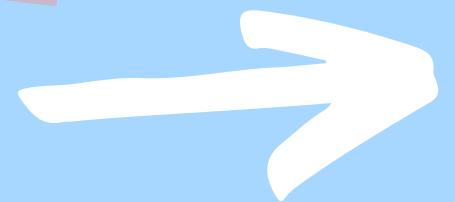
#7

## An Octopus

Two hearts work just to move blood around the gills, and one just for the organs. When they swim, the organ heart stops beating which makes them rather tired - this is why they mostly choose to crawl around!

#8

Which books starts with the line "*All children, except one, grow up.*"



**DAYBREAK**

Enjoyed yourself? Consider donating.  
[www.daybreakfgc.org.uk/puzzling](http://www.daybreakfgc.org.uk/puzzling)



#8

## Peter Pan

Peter Pan was created by Scottish novelist J.M. Barrie in a 1904 play and 1911 novel, called Peter and Wendy.

#9

What is Mary Anning famous for and where did she live?



**DAYBREAK**

Enjoyed yourself? Consider donating.  
[www.daybreakfgc.org.uk/puzzling](http://www.daybreakfgc.org.uk/puzzling)

#9

# Collecting fossils in Lyme Regis

Born in 1799, in Lyme Regis, England, Anning was fossil collector, dealer, and palaeontologist famous for discovering many fossils along the Jurassic coast since her childhood!

**Daybreak is a charity.**

We work alongside people facing a range of challenges. We enable them to come together with their support network and find solutions to move forward, be safe and thrive.

**If you enjoyed today's quiz, please consider donating to help us support families, children and young people. Thank you!**

[www.daybreakfgc.org.uk/puzzling](http://www.daybreakfgc.org.uk/puzzling)

**DAYBREAK**

